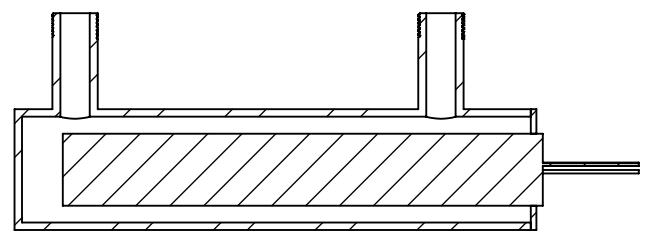
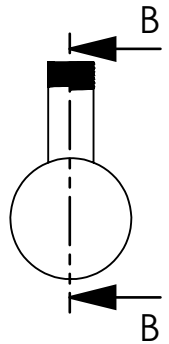
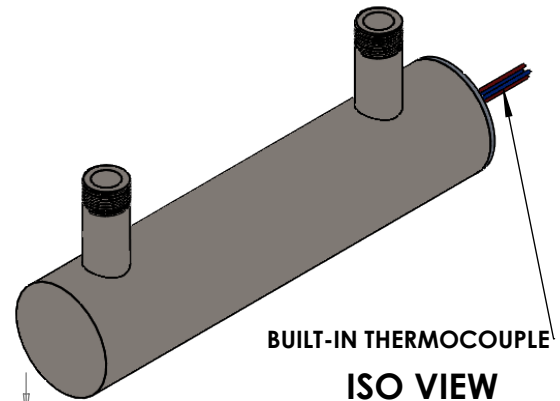


B

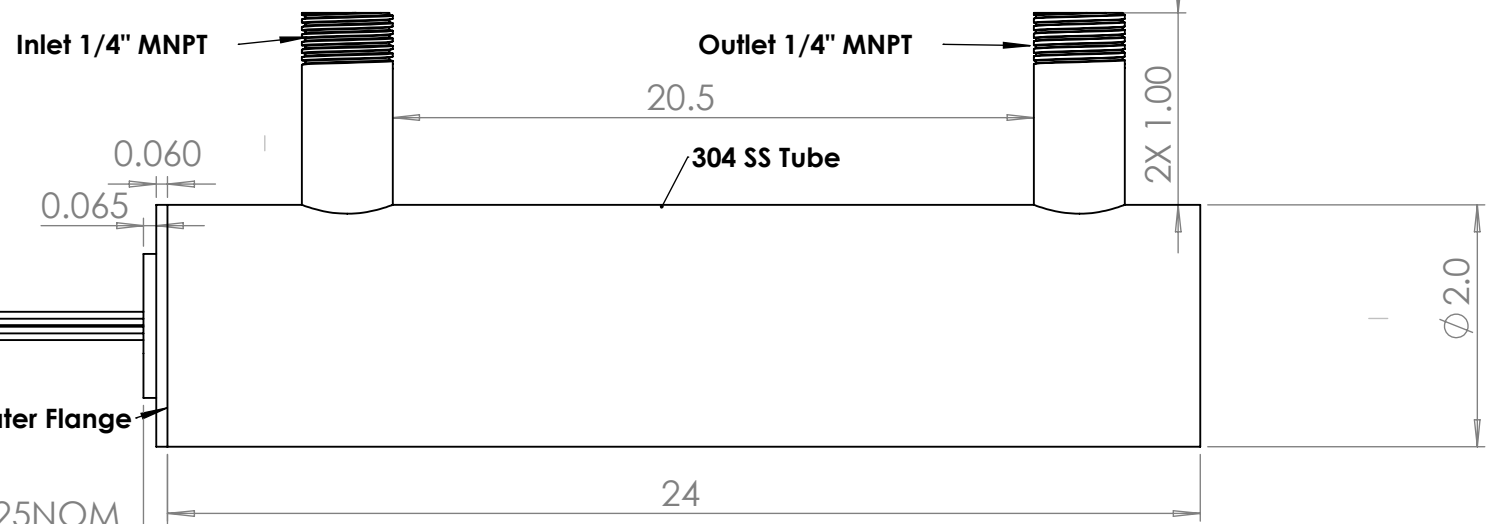


SECTION B-B



BUILT-IN THERMOCOUPLE
ISO VIEW
SCALE: NTS

B



Inlet 1/4" MNPT

Outlet 1/4" MNPT

304 SS Tube

Heater Flange

0.125NOM

4X Teflon Leads

NOTES

1. THIS DRAWING IS FOR INDUSTRIES- ONLY
2. HEATER: 9.0 KW (2 Zone 4500W each) (+/-10%), 240V
3. BUILT-IN TYPE K" TC NEAR OUTLET
4. MUST NOT POWER WITHOUT LIQUID FLOW
5. STEAM GENERATOR - Pressure Test 100PSI Air @70F
- 6.

PROPRIETARY AND CONFIDENTIAL
 THE INFORMATION CONTAINED IN THIS DRAWING IS THE SOLE PROPERTY OF BCE INC. ANY REPRODUCTION IN PART OR AS A WHOLE WITHOUT THE WRITTEN PERMISSION OF BCE INC. IS PROHIBITED.

UNLESS OTHERWISE SPECIFIED:		NAME	DATE
DIMENSIONS ARE IN INCH TOLERANCES:		DRAWN	A.M
FRACTIONAL ±		CHECKED	D.S
ANGULAR: MACH ±		ENG APPR.	
BEND ±		MFG APPR.	
TWO PLACE DECIMAL ± .01		Q.A.	
THREE PLACE DECIMAL ± .005		COMMENTS:	
INTERPRET GEOMETRIC TOLERANCING PER:			
MATERIAL			
304- SS			
FINISH			
N/A			
DO NOT SCALE DRAWING			



TITLE:
SMART FLOW HEATER
9KW/240V

SIZE	DWG. NO.	REV
A	BCE10536	1
SCALE: NTS	WEIGHT: N/A	SHEET 1 OF 1

A

A

2

1